

Bridging the Paper and Digital Worlds

Electronic processing has become a dominant feature in the scientific, architectural and engineering professions. However, the New Computer Age often needs its *past*.—its “*paper roots*.”

The CAD-Scan Connection links these two worlds. We're a small, growing company with many options and a driving force for quality.

935 12th Street-Suite B
Paso Robles, CA 93446

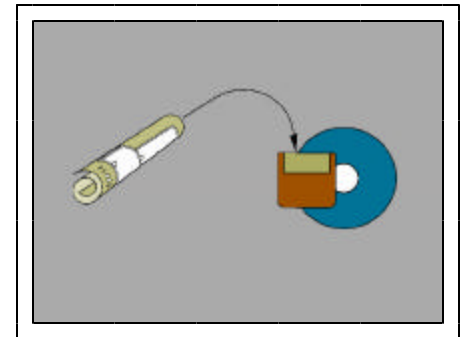
The CAD-Scan Connection



The CAD-Scan Connection

RASTER TO VECTOR CONVERSION & LARGE FORMAT SCANNING

Scan the world



TEL: (805) 237-

FAX: (805) 237-

e-mail: info@cadscanconnection.com

Web site: www.CADscanconnection.com

ARCHIVING



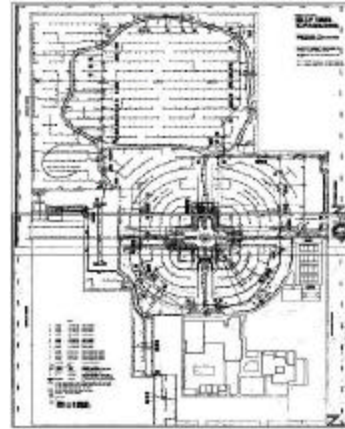
Scanning blueprints, mechanical drawings, aerial photos, etc. have redefined the use of archives. Once scanned, the images are in a digital format and can be saved onto CDs. One CD stores up to 650 megabytes (possibly over 1,000 drawings)—thereby:

- ◇ SAVING TIME and COST by having CD files sit by the computer at your fingertips.
- ◇ FREEING-UP SPACE for other office purposes.
- ◇ SAFEGUARDING against FIRE or other hazards by having a second CD set in the safe.
- ◇ PROTECTING delicate and over-used drawings.
- ◇ EASY TO TRANSPORT files in a brief case.
- ◇ ENABLING FAST COMMUNICATION—ELECTRONICALLY—any where, any time—and, with hardly any cost—by e-mail.

We scan....blueprints, sepias, grayscale, aerial photos, quad maps, good drawings, bad drawings,

RASTER IMAGES

A raster image is defined by dots. Blueprints, aerial photos, quad maps are examples of this type of graphic format. Very small dots (pixels) are aligned to create an image. The picture shown here is an example of two blueprints that have been scanned—digitally computerized, scaled and spliced. However, the format remains as a *raster file (tif, jpg, bmp, etc.)*—and generally unalterable.



Two raster images spliced together.

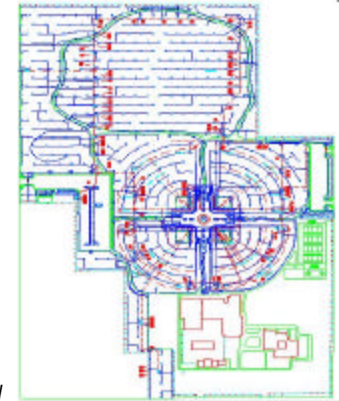
The CAD-Scan Connection, however, can go one step more— with our sophisticated programs, we can alter raster images; i.e., despeckle, deskew, remove data, move data, etc.

AND, ...even go one more—we CONVERT RASTER TO VECTOR. We specialize in scanning a raster image into the computer, then translating that image to be read graphically in CAD as a vector format.

VECTOR IMAGES

A vector image is defined by mathematics —a circle is defined by a radius; a line's distance is from point A to point B.,

This is the language of CAD. The drawing to the right is an example of a CAD file. Its vector format has layers and changeable



Vectorization of "spliced" raster drawings

Lastly, *The CAD-Scan Connection* does *HYBRID* projects where *raster* and *vector formats* are combined.

The CAD-Scan Connection

935 12th Street-Suite B
Paso Robles, CA 93446

Phone: (805) 237-9347

FAX: (805) 237-7723

Email: info@cadscanconnection.com

Web site: www.CADscanconnection.com